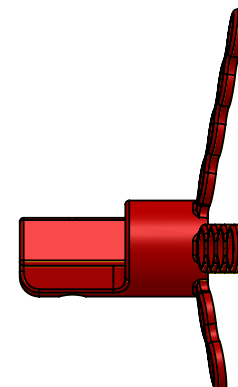
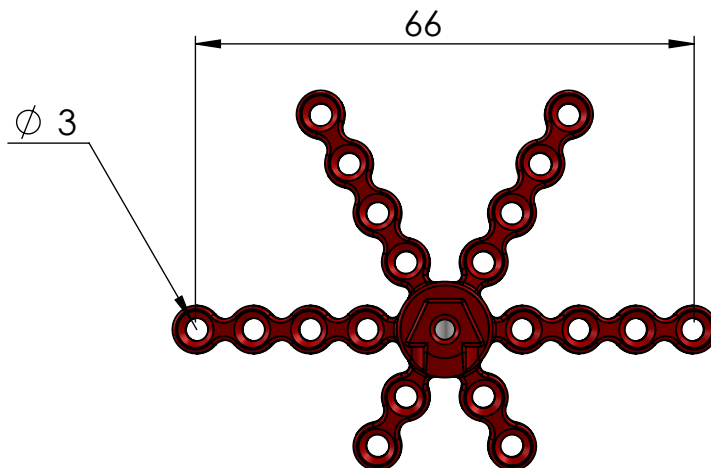
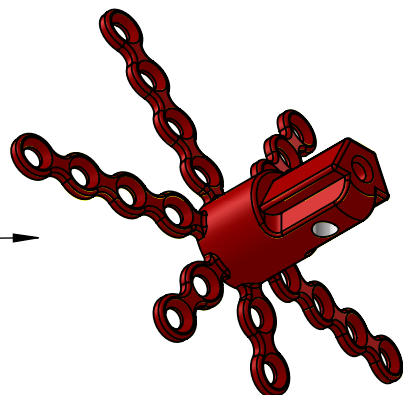
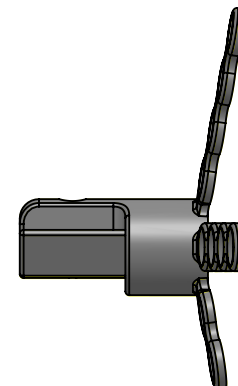
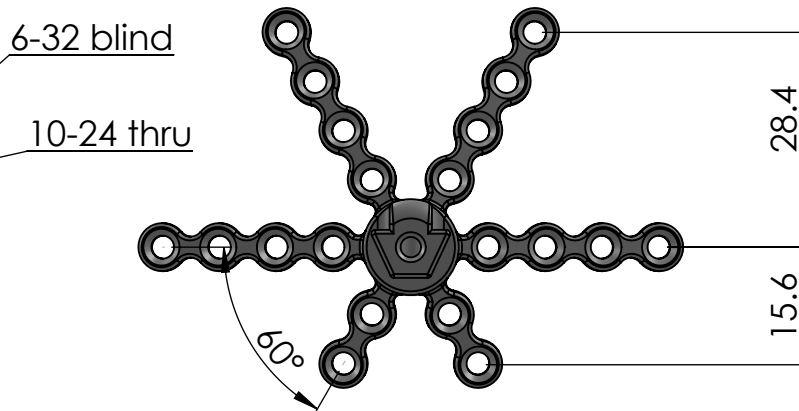
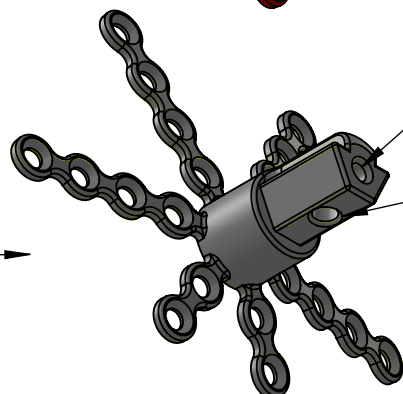


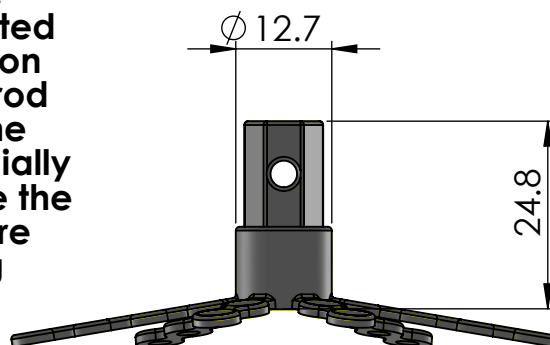
**DAHP-1**



**DAHP-2**



There are two different configurations available. The only difference is the post orientation is rotated 180 degrees. On the top, in red, is DAHP-1 and on the bottom in gray is DAHP-2. The connecting rod and screw mount from the trapezoidal side of the post, so if the two small legs are implanted medially then DAHP-1 would be a better choice because the connecting rod and mounting screw will be more accessible. Please specify configuration during ordering.



**GrayMatter Research**

TITLE:

**DAHP**

Double Asymmetric  
Head Post

MATERIAL

**Titanium 6Al-4V**

DIMENSIONS ARE IN MM

SHEET 1 OF 1